

Installing Mono and Nant on Fedora 10

Overview

This procedure describes how to successfully install Mono and Nant on Fedora 10.

The following assumptions are made in this discussion:

- The Operating System is *Fedora 10* with the *Gnome* desktop installed.

Install Mono

1. Start the *Package Manager* from the *Add/Remove Software* entry on the *System/Administration* menu:



2. Enter **mono** in the search box in the upper left column and click **Find**. When the search has completed, select the packages listed below, if not already installed. Check the missing packages and click the **Apply** button at the bottom right.

(mono-addins)
(mono-basic)
(mono-core)
(mono-data-sqlite)
(mono-debugger)
(mono-extras)
(mono-jscript)
(mono-locale-extras)
(mono-nat)
(mono-ndoc)
(mono-nunit)
(mono-nunit22)
(mono-sharpcvslib)
(mono-tools)
(mono-web)
(mono-winform)
(mono-zeroconf)

Addins for mono
VisualBasic.NET support for mono
The Mono CIL runtime, suitable for running .NET code
sqlite database connectivity for Mono
A debugger from Mono
Provides the infrastructure for running and building...
JScript .NET support for Mono
Extra locale information for Mono
.NET library for automatic port forwarding
Code Documentation Generator for .NET
NUnit Testing Framework
Unit-testing framework for .NET
Client cvs library written in C#
The mono documentation system
ASP.NET, Remoting and Web Services for Mono
Windows Forms Implementation for Mono
Mono-zeroconf namespace

Install Nant

1. Using a browser, download the Nant source from Novell

<http://ftp.novell.com/pub/mono/sources/nant/>

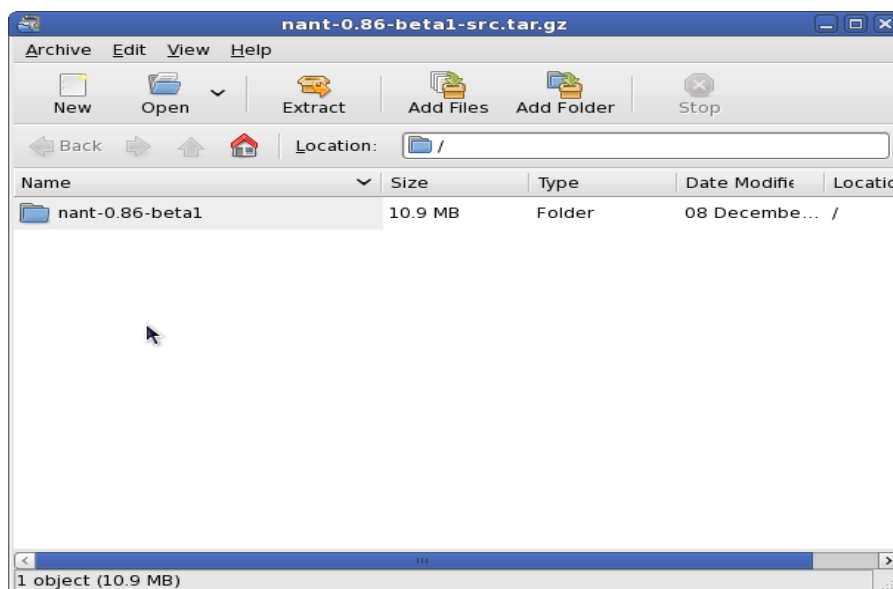
At the time of this writing, the required package is

nant-0.86-beta1-src.tar.gz

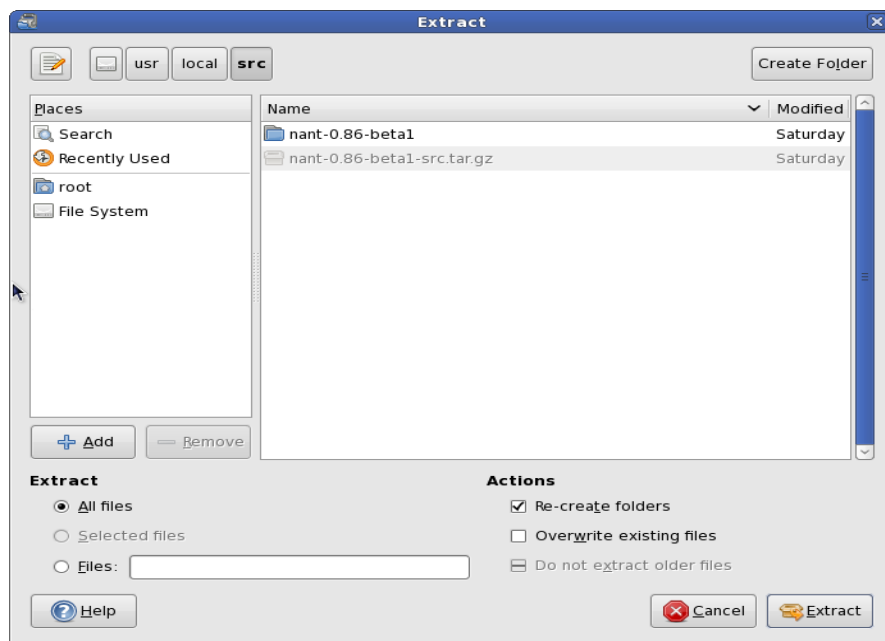
2. Open a terminal window and sign in as **root**. Move the downloaded file to the **/usr/local/src** folder. Navigate to the **/usr/local/src** folder and uncompress and extract the source:

```
[jay@fedora10 jay]$ su
Password:
[root@fedora10 jay]# mv nant-0.86-beta1-src.tar.gz /usr/local/src
[root@fedora10 jay]# cd /usr/local/src
[root@fedora10 tjs]# file-roller
```

3. Click on the *Extract* button on the top menu bar,



- Click on the *Extract* button on the bottom right corner of the window



- Exit the **file-roller** when the extract has completed.

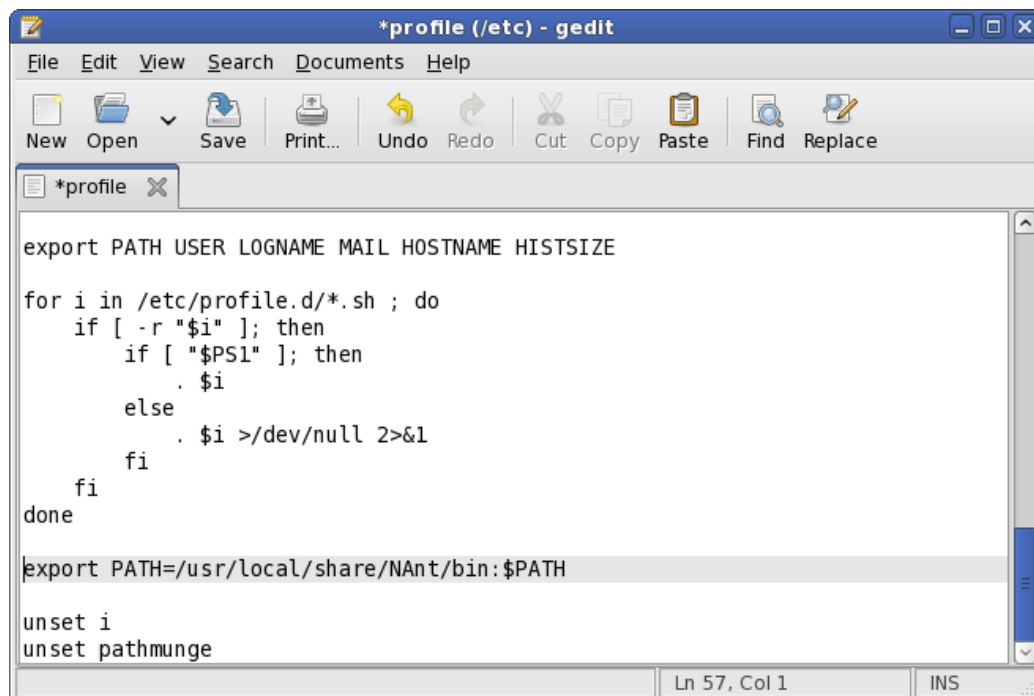
- Make **Nant** from the terminal window:

```
[root@fedora10 tls]# cd nant-0.86-beta1
[root@fedora10 tls]# make
[root@fedora10 tls]# make install prefix=/usr/local/share/Nant
[root@fedora10 tls]# make clean
```

- Edit **/etc/profile**:

```
[root@fedora10 tls]# gedit /etc/profile
```

8. Add the path to **Nant** to the end of the file:



The screenshot shows a gedit window titled '*profile (/etc) - gedit'. The window contains a shell profile script. The script includes environment variables, a loop to source files in /etc/profile.d/, and a new line added to the PATH variable. The status bar at the bottom indicates 'Ln 57, Col 1' and 'INS'.

```
export PATH USER LOGNAME MAIL HOSTNAME HISTSIZE

for i in /etc/profile.d/*.sh ; do
    if [ -r "$i" ]; then
        if [ "$PS1" ]; then
            . $i
        else
            . $i >/dev/null 2>&1
        fi
    fi
done

export PATH=/usr/local/share/NAnt/bin:$PATH

unset i
unset pathmunge
```

9. *Logout and re-login* to make the changes available.